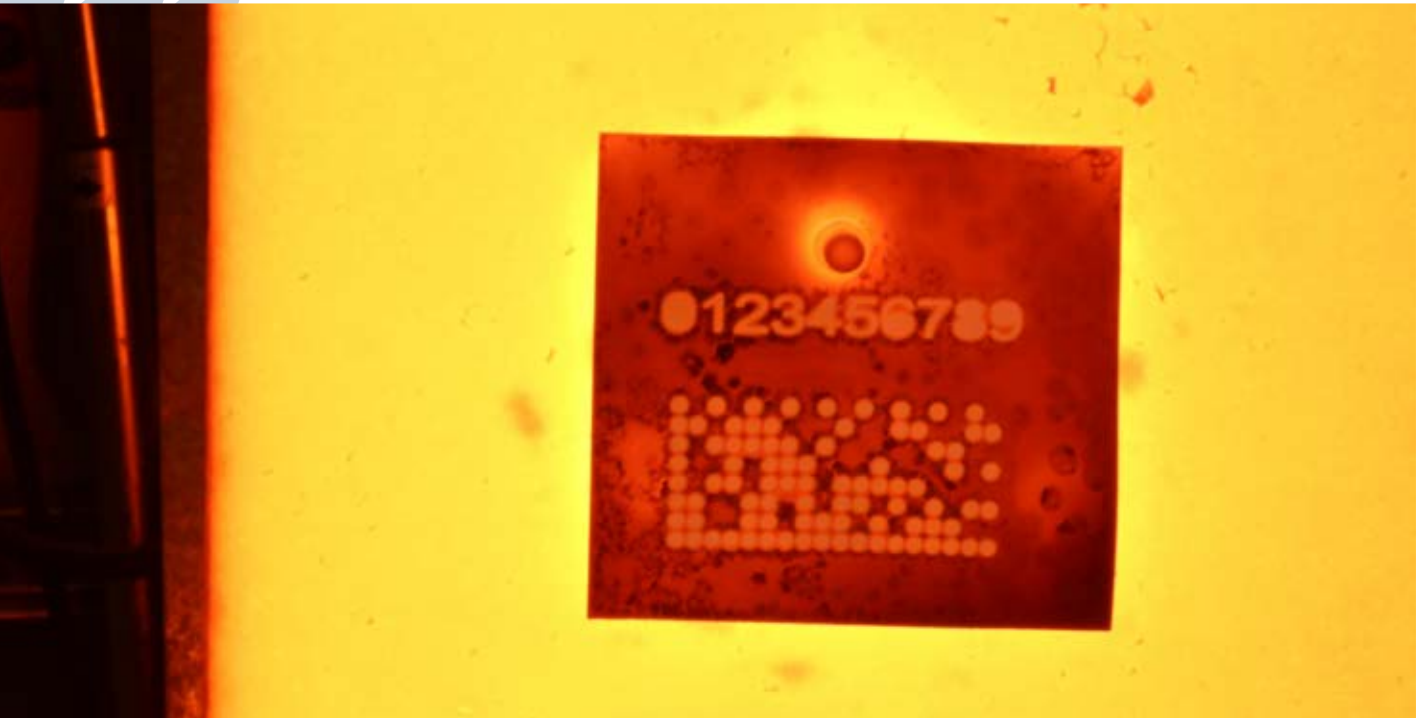


TAGS AND LABELS FOR AUTOMATIC APPLICATIONS

At first sight, a label or tag to be applied on a metallurgical product for its identification could seem a simple matter. It is true in some cases, but as soon as some details of the application are analyzed, immediately appears that specific know-how is required to make the right choices.



STEEL 1300 °C - PSA 1300

The customers needs are very wide and different, depending not only by the type of the product to be identified, but also by the following key factors:

- Physical characteristics of the product at the point of the application (temperature, sizes, surface roughness or with slag)
- Duration and type of the storage (indoor/outdoor)
- Permanent or removable markings
- Readability after post-processes (heat treatments, chemical bath...)
- Automatic readability for automatic tracking
- Cycle time for the automatic application
- Available budget for the automatic tagging system and consumables



Image of Data Matrix reader



The availability of many different materials and coatings, allows to produce a very wide range of tags and labels.



A global overview of the Tags and Label categories is summarized in the following table, highlighting the main characteristics and the attaching methods.

Type	Material	Marking Technology	Attaching Method	Max Temp. (°C)	Heat Treatments Resistant	Chemical Bath Resistant	Printing time	Price
CGS 600	Coated Galvanized steel	Laser	Welding or PIN	600			●●○○○	●●●○○
CSS 1000	Coated Stainless Steel	Laser	Welding or PIN	1000			●●○○○	●●●○○
PSS 1000	Pretreated Stainless Steel	Laser	Welding or PIN	1000			●●●○○	●●○○○
PSA 1300	Pretreated Special Alloy	Laser	Welding or PIN	1300	✓	✓	●●●●○	●●●○○
SPP 400	Special Paper/Plastic	Thermal Transfer	PIN	400			●○○○○	●○○○○
CTS 1000	Coated Thin Steel	Thermal Transfer	PIN	1000			●○○○○	●●●●●



CSS 1000



CGS 600



SPP 400

IMTS is the global solutions partner to satisfy any customer need, supplying Tags and Labels, automatic systems to apply them and industrial readers.

Contact us to know more about special versions.