

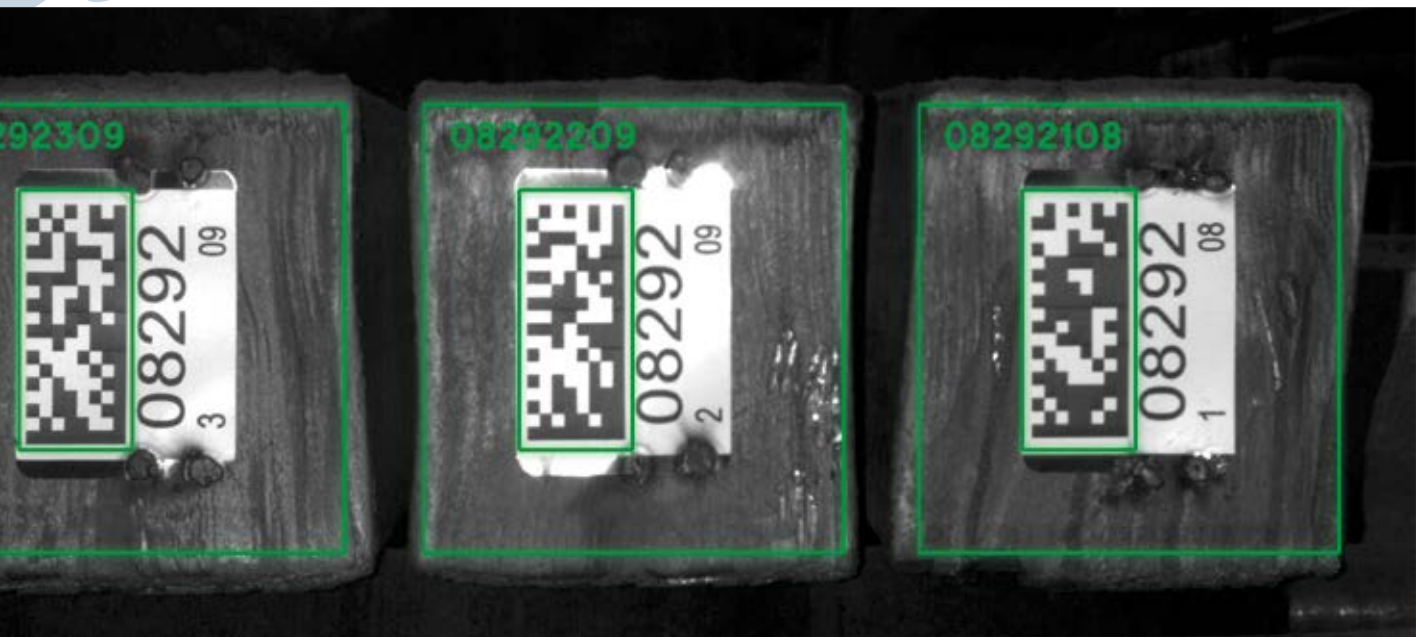
# SR 200 + SR 250

## SMART READER + SMART READER AND RECOGNIZER

Smart Reader **200** series is a device, smart camera based, specifically designed to read codes marked on hot/cold metal products. It reads 1D and 2D codes with any orientation and regardless of the marking technology used (e.g. laser, ink, paint etc...).

The reader is very useful in production lines where product tracking is required. Typically only few readers installed in key points of the production line, such as the end of a cooling bed or entrance of a furnace etc., fulfill the tracking requirements.

**SR 200** was specifically engineered to be installed in metal marking shops, therefore it is rugged reliable and highly resistant to heat, dust, vibration and noise, all necessary features to work in such environments



**SR 200** is mainly composed of:

- Smart camera
- Lens
- Optical filter
- High Power LED
- Stainless steel enclosure

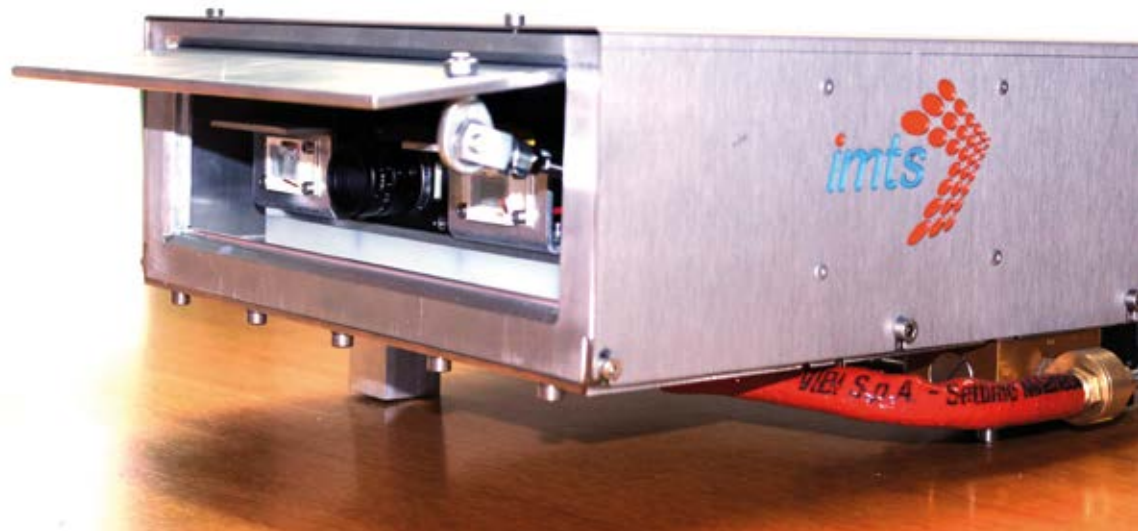
The rugged enclosure can be equipped with the air or water cooled camera base plate and the mechanical shutter for heat and dust protection.

The shutter is always closed except for a few seconds each reading, making the lens cleaning operation a very rare need.

**SR 200** can be equipped with one or two High Power LED's, flash driven, allowing the fast capture of images particularly suitable for moving products. The flash also minimizes the day/night brightness difference, ensuring a high definition, quality and contrast to the image.

The reader is connected to the customer automation system to manage the start signal and data exchange.





SR 250 recognizes the unmarked billet



Data Matrix content can be different from clear code



The **SR 250** model has the following additional functions:

- Products localization (X, Y, angle)
- Products counting (billet, blooms)
- Detection of unmarked products

**Options:**

- Single High Power LED
- Double High Power LED
- Shutter
- Water cooled version

**Typical specifications:**

- Power supply: 24 Vdc
- Digital I/O: 2 Inputs, 4 Outputs
- Data Link: Ethernet
- Read codes: 39, 128, Data Matrix (other on request)

Contact us to know more about special versions.

SR 200 + SR 250 EN rev0



IMTS s.r.l. Via del Trattarello Tarantino, 6 - 74123 Taranto  
 ITALY Tel +39 099 47 25 996 - info@imts.eu - www.imts.eu